

TECHNICAL SPEC FOR Track system

System Model: MK 8

TEL Clean Track

Tool status :

The tool, inclusive PI and BARC pumps, have been flushed and cleaned with solvent, and dry cleaned with CCA. The solvent lines (Thinner) have been disconnected from the tool, as well as the electric power supply lines.

Decommissioning was done by trained Litho technicians.

Specific Model: SN MD716670

Wafer size: 6 inch

Wafer type: Jeida flat

Wafer flow: offline

Number coater/developer modules: 1 coat module for poly imide and BARC coating

i-Line system: NA

Resists / Coaters: 1 1PI + 1 BARC

E2 Develop nozzle kits: NA

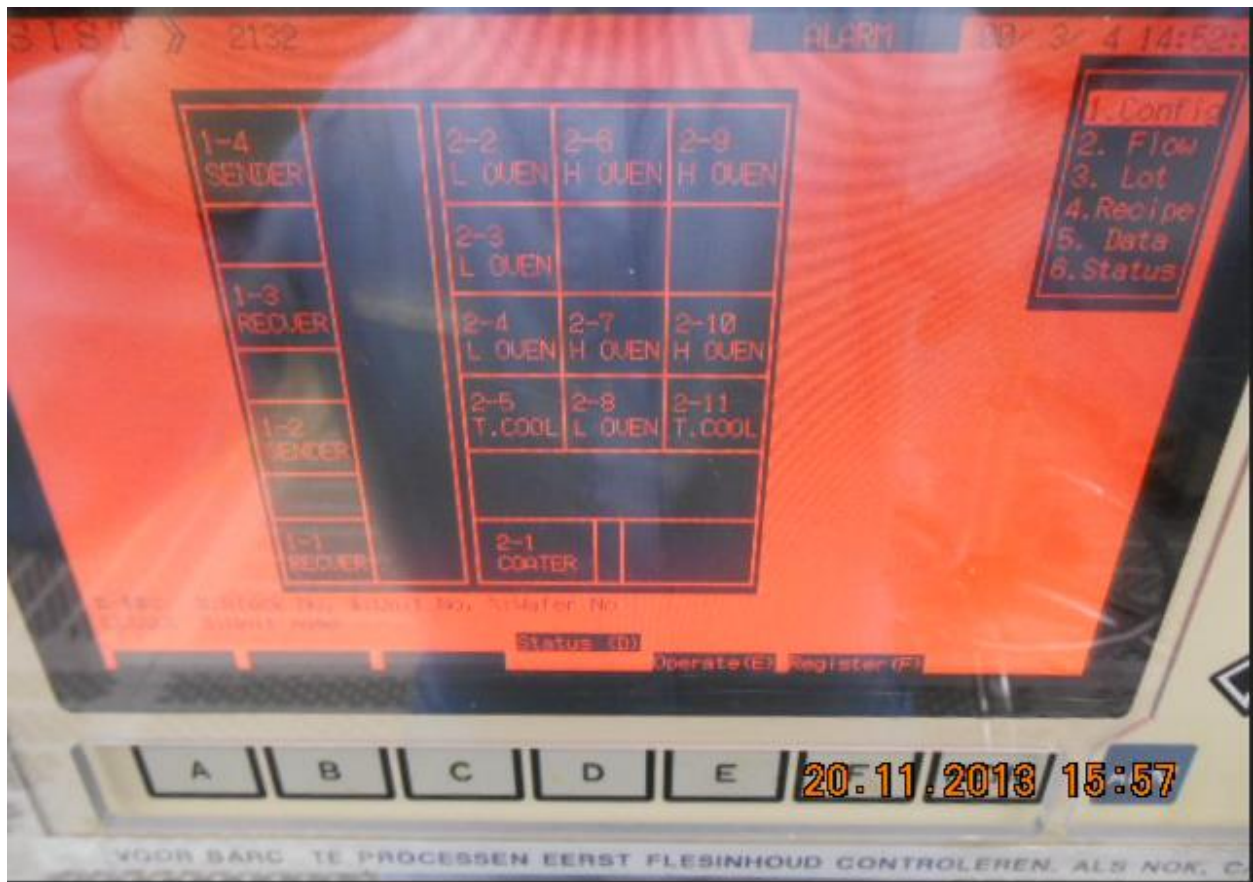
RRC Pumps & kits: Top and bottom EBR

Dual-stream nozzles / Developer: NA

Solvent & developer auto supply systems: Buffer canister for backside rinse

Temperature / Humidity controller:

Configuration/layout of each block:



GEM: Yes

AVG:

HMDS Bubblers: NA

Power supply: 208 V, 3 Phase, AC Transformer:

Vintage: 1996

Missing parts: none

Defected parts:none

Operating system:

<u>Machine</u>	PICOAT
<u>S.N. :</u>	MD716670
<u>Manufacturing date</u>	Jan-96
<u>Machine soft type</u>	Mk 8
<u>ARDiMuS</u>	OK
<u>Main Controller</u>	MK807.38
<u>Process Block1</u>	M8B0082Y.00
<u>Process Block2</u>	M8B0082Y.00
<u>Process Block3</u>	
<u>Process Block 4</u>	
<u>Controller type/model</u>	FC-9801F model 1
<u>Disk</u>	I/O data Silicon disk
<u>Floppy drive</u>	External Logitech SFD-331MX

- Spare parts, manuals (if any)